

# Quick start guide

Digital Pocket Memo 9500

Digital Pocket Memo 9520



[www.philips.com/dictation](http://www.philips.com/dictation)

---

EN Quick start guide

---

DE Kurzanleitung

---

FR Guide de démarrage rapide

---

ES Guía de inicio rápido

---

NL Snelle startgids

---

IT Guida rapida di introduzione

---

**PHILIPS**

# 1

# Install the software

DE Installieren der Software

ES Instalar el programa

IT Installazione del software

FR Installation du logiciel

NL De software installeren

## Connect the USB Smart Key

DE USB Smart Key anstecken

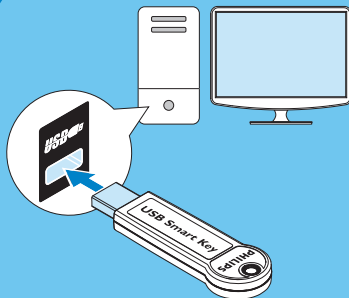
FR Connecter l'USB Smart Key

ES Conecte el USB Smart Key

NL USB Smart Key aansteken

IT Collegare la USB Smart Key

A



## Install SpeechExec software

DE SpeechExec-Software installieren

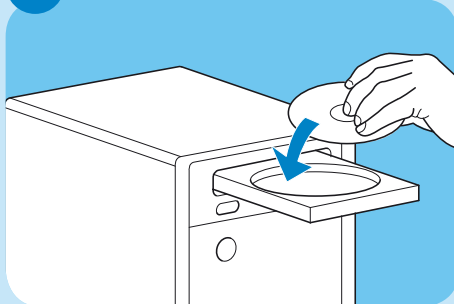
FR Installation du logiciel SpeechExec

ES Instalar el programa SpeechExec

NL De SpeechExec-software installeren

IT Installazione del software SpeechExec

B



C



D



# 2

# Install the hardware

DE Installieren der Hardware

ES Instalar el hardware

IT Installazione del hardware

FR Installation du matériel

NL De hardware installeren

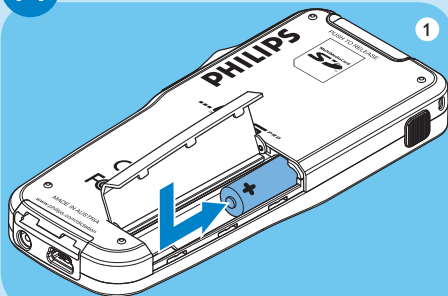
## Insert the batteries

DE Einlegen der Batterien

ES Colocar las baterías

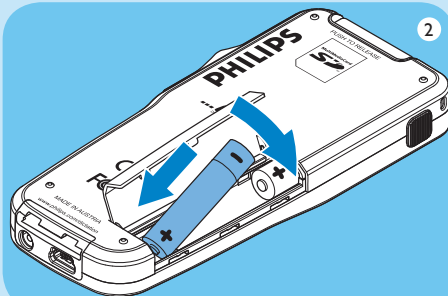
IT Inserire le batterie

A



FR Mettre les piles en place

NL De batterijen plaatsen



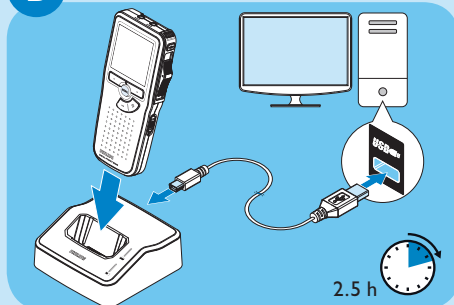
## Recharge the batteries

DE Aufladen der Batterien

ES Recarga de las baterías

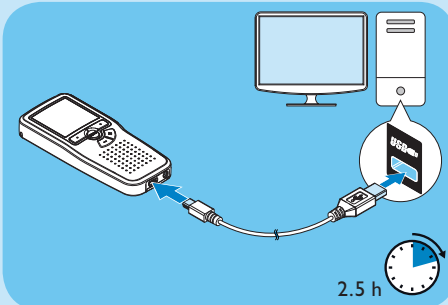
IT Ricarica delle batterie

B



FR Recharger les piles

NL De batterijen opladen



# 3 Record

- DE Aufnehmen
- ES Grabación
- IT Registrazione

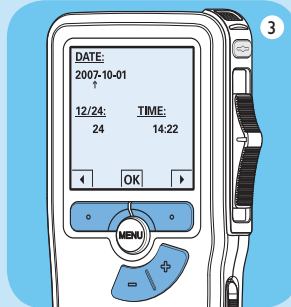
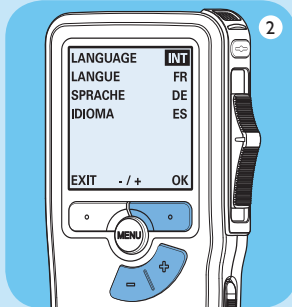
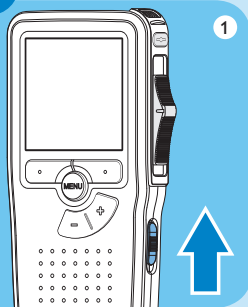
- FR Enregistrer
- NL Opnemen

## Activate the Digital Pocket Memo

- DE Aktivieren des Pocket Memo
- ES Activación del Pocket Memo
- IT Attivazione del Pocket Memo

- FR Mettre le Pocket Memo en service
- NL De Pocket Memo activeren

A

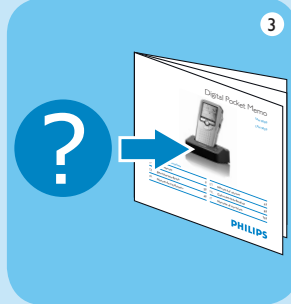
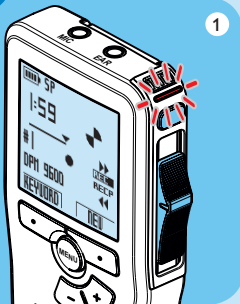


## Create a recording

- DE Eine Aufnahme erstellen
- ES Crear una grabación
- IT Creare una registrazione

- FR Créer un enregistrement
- NL Maak een opname

B



# 4 Transfer recordings to the PC

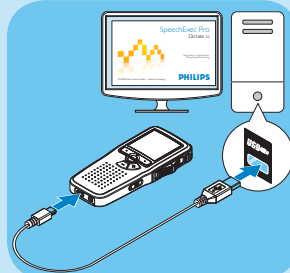
**DE** Aufnahmen auf den PC übertragen

**ES** Transferencia de grabaciones al PC

**IT** Trasferimento delle registrazioni sul PC

**FR** Transfert des enregistrements vers le PC

**NL** Opnames downloaden naar de PC



**EN** **Caution:** Magnets are used for the pouch. Keep magnetic cards (such as credit cards) away from the pouch.

**DE** **Achtung:** Für das Etui werden Magnete verwendet. Halten Sie Magnetkarten (wie etwa Kreditkarten) vom Etui fern.

**FR** **Attention :** Des aimants sont utilisés pour la housse. Éloignez les cartes magnétiques (comme les cartes de crédit) de la housse.

**ES** **Precaución:** La funda contiene piezas magnéticas. Mantenga cualquier tarjeta magnética alejada de la funda (como por ejemplo tarjetas de crédito).

**NL** **Let op:** Er zitten magneetjes in de hoes. Houd magnetische kaarten (zoals credit cards) uit de buurt van de hoes.

**IT** **Avvertenza:** La custodia contiene delle parti magnetiche. Tenere lontano dalla custodia le schede magnetiche (ad esempio le carte di credito).

# Need help?

Look up our Website [www.philips.com/dictation](http://www.philips.com/dictation)

# Besoin d'aide?

Visitez notre page Web à l'adresse [www.philips.com/dictation](http://www.philips.com/dictation)

# Benötigen Sie Support?

Besuchen Sie unsere Website [www.philips.com/dictation](http://www.philips.com/dictation)

# ¿Necesita ayuda?

Consulte nuestro sitio Web [www.philips.com/dictation](http://www.philips.com/dictation)

# Hulp nodig?

Ga naar onze website [www.philips.com/dictation](http://www.philips.com/dictation)

# Bisogno d'aiuto?

Contatta il sito internet [www.philips.com/dictation](http://www.philips.com/dictation)

Specifications are subject to change without notice.

Trademarks are the property of Royal Philips Electronics or their respective owners.

© 2008 Royal Philips Electronics. All rights reserved.

Document version 1.0, 26/02/2008. 5103 109 9699.1